

Experiment No: 3

Date:

SETTING PERMISSIONS TO USERS

AIM:

To demonstrate the working of user permission settings, by doing the exercise given below.

Create three users X, Y and Z with the following criteria.

1. No complex password
2. Minimum password length 3
3. Password history set to 3
4. Lock account on 2 invalid logon
5. Lockout duration set to one minute.
6. Set permission for the users to logon to the server itself.

Create a folder 'test' in the C drive and set the following permissions.

1. X → Read only
2. Y → Full permission
3. Z → No permission

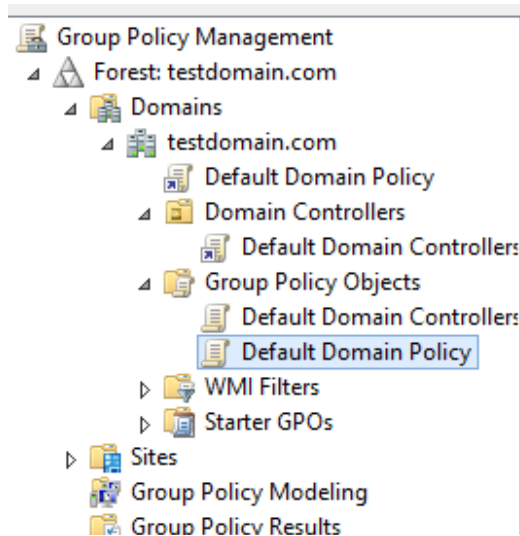
PROCEDURE

- **Changing the Group Policy:**

Step 1: Press **Win + R** to bring out the **Run** dialog. Then type **gpmc.msc** and hit the Enter key to open the **Group Policy Management Console**. (Or go to **Server Manager -> Tools -> Group Policy Management**).

Step 2: Expand the item **Forest: <your domain>**, then the folder **Domains**, and expand your domain.

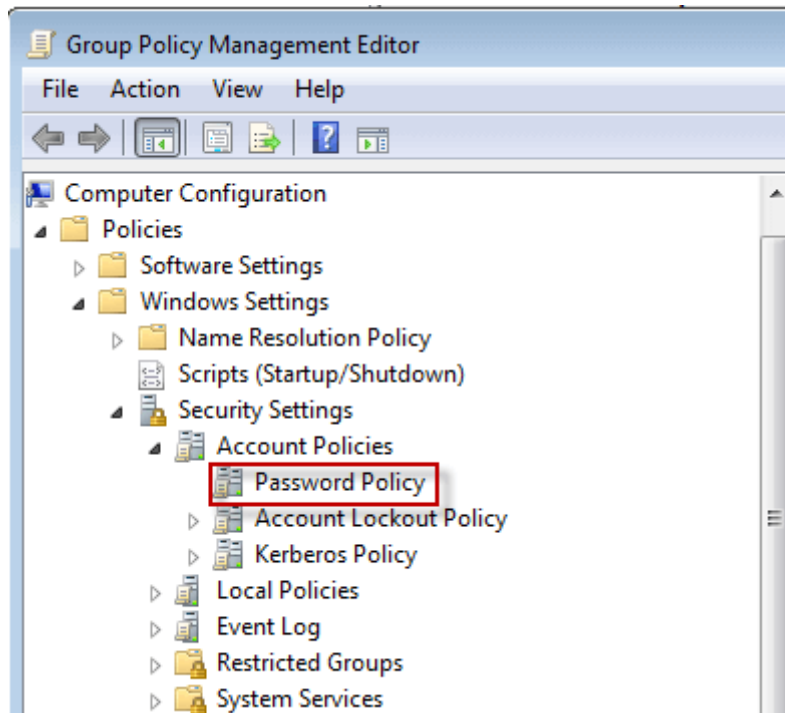
Step 3: Go to your **domain -> Group Policy Objects -> Default Domain Policy**.



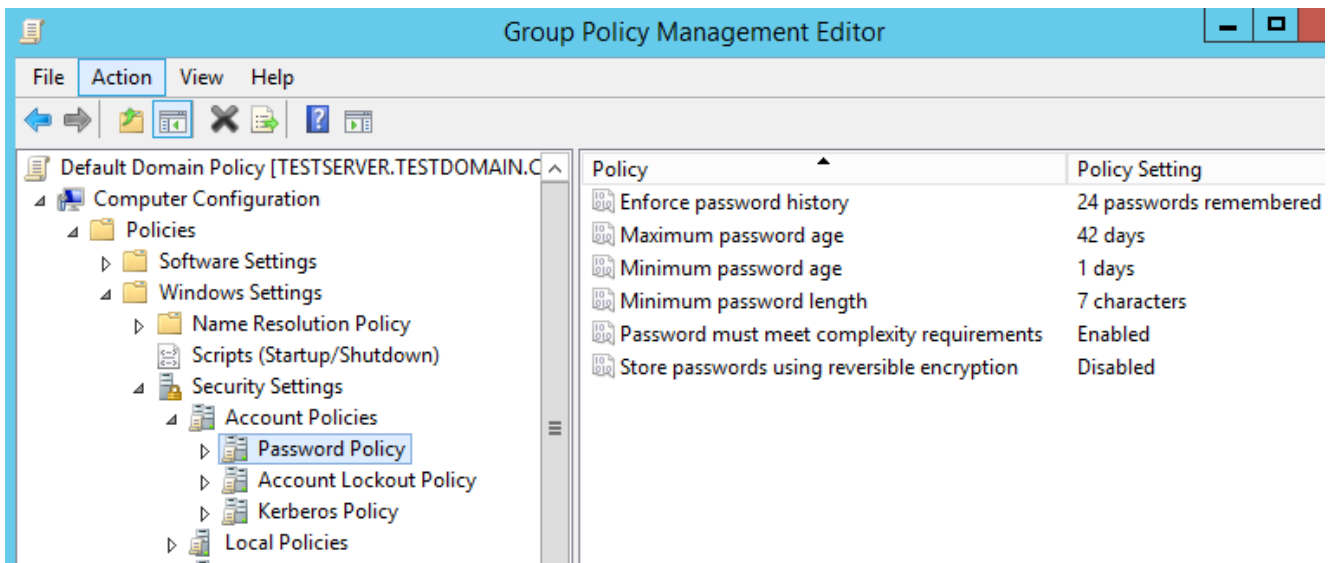
Step 4: Right click on it and select **Edit**.

Step 5: In the new window, expand **Computer Configuration -> Policies -> Windows**

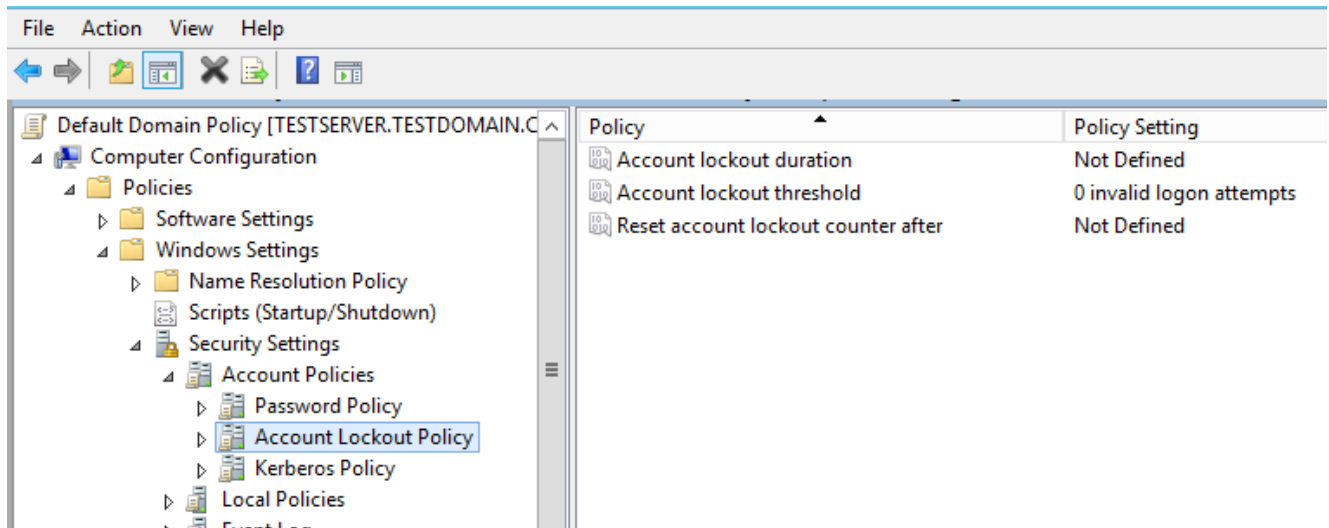
Settings -> Security Settings -> Account Policies -> Password Policy.



Step 6: In the right pane, you can change the password policy according to your own needs by double clicking each one.



Step 7: Similarly, select **Account Lockout Policy** to change the account lockout settings.



- **Creating User:**

Step 1: Open Start Menu and click on "Administrative Tools".

Step 2: Now a list of items will appear; select "Active Directory Users and Computers".

Step 3: Right-click on the domain and go to "New". In New go to the "Users" to add a "New User".

Step 4: Now a form will be available. Then provide all necessary details of the new user. After that click on the "Next" button.

Step 5: Select proper password options. Click Next.

Step 6: Now all the provided values will be shown and will be asked to click on the "Finish" button. Click it to finish the user creation.

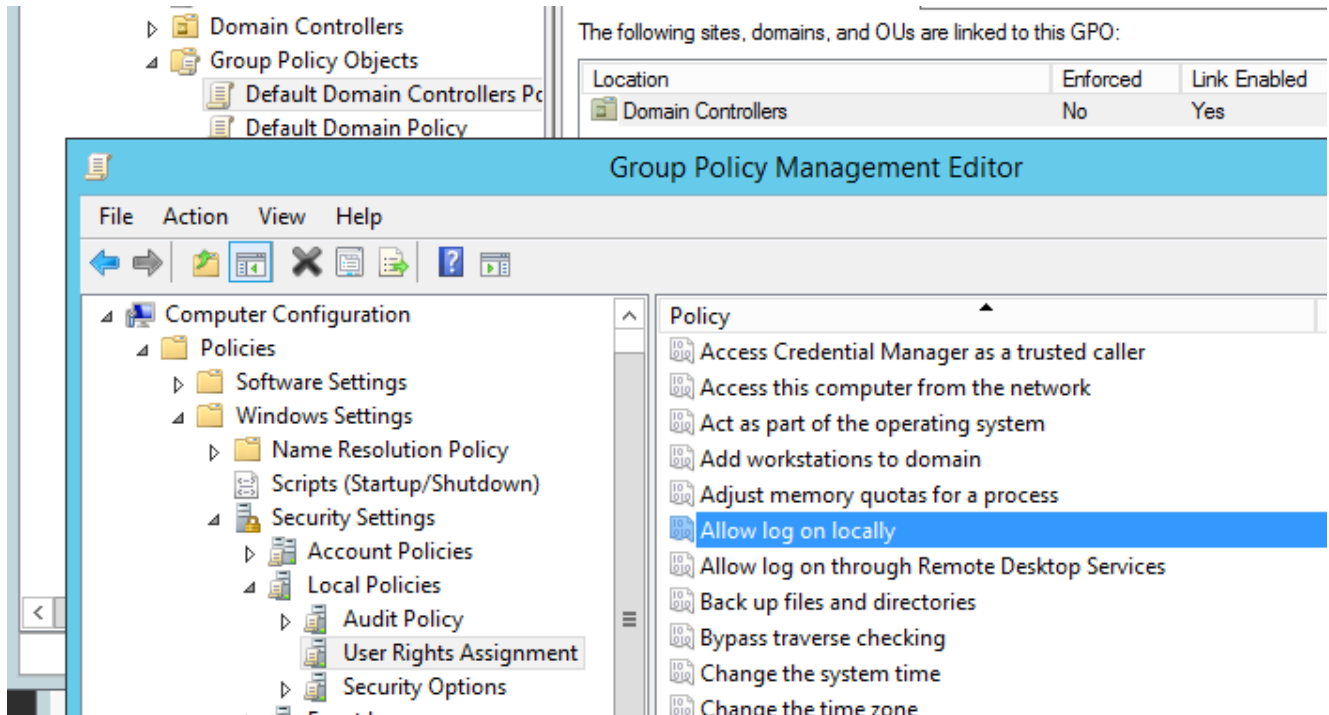
- **Local Sign-on behavior**

By default, a user can't log on to the server system. To change this User Local Sign-on behavior, we have to change the **Default Domain Controllers Policy**.

Step 1: In the Group Policy Management console, go to **Default Domain Controllers Policy**.

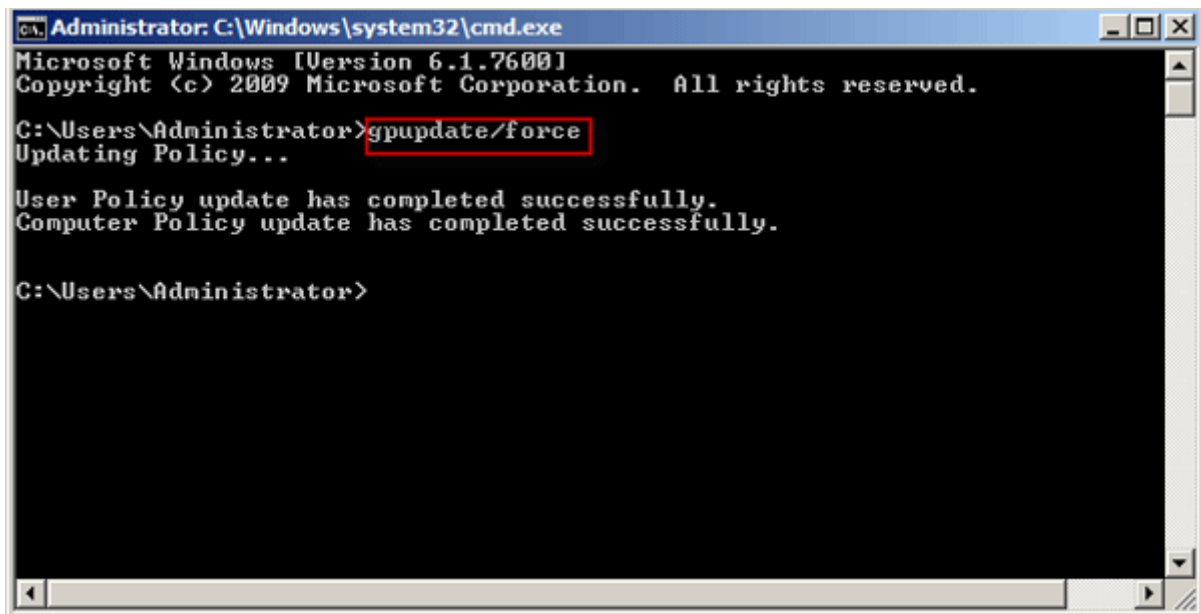
Step 2: Right click on it and select **Edit**.

Step 3: In the new window, expand **Computer Configuration -> Policies -> Windows Settings -> Security Settings -> Local Policies -> User Rights Assignment -> Allow logon locally** and add the users who need to logon to the server computer. (To add user/group, double click it. **Properties-> Add User or Group -> Browse -> Advanced -> Find Now**)



- **Updating the Group Policy**

After any policy has been changed, open **Run (Window key + R)** dialog, type **cmd** and hit **Enter** to open **Command Prompt**. Then run the command **gpupdate/force** to update policy.



- **Sharing a Folder**

Step 1: Create a folder in the desired location

Step 2: Right click and take **Properties**.

Step 3: In the tab **Sharing**, click **Share**.

Step 4: Select the user and set the desired permissions.

Step 5: *If the user has the permission to logon to the server system, the **Security** tab also has to be configured accordingly.*

RESULT:

Implemented the given criteria successfully.